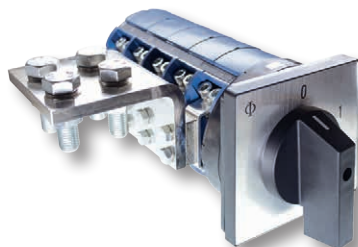


According to IEC 60947-3, EN 60947-3, VDE 0660 part 107



Rated Thermal Current I _u /I _{th}				A	2400/2000 ¹
Rated Insulation Voltage U _i ²				V	690
Rated Impulse Withstand Voltage U _{imp}				kV	6
Rated Operational Current I _e					
AC-20A	No-load operation		20 V–690 V	A	2400
	Occasional switching under load cos Phi 0,8	3 phase, 3 pole; 1 phase, 2 pole	220 V–240 V 500 V–500 V 660 V–690 V	A	1200 800 400
AC-21B	Occasional switching of resistive loads, including moderate overloads	3 phase, 3 pole; 1 phase, 2 pole	220 V–240 V 500 V–500 V 660 V–690 V	A	800 630 350
Rated Utilization Category					
AC-23B	Occasional switching of motors or other high inductive loads	3 phase, 3 pole	220 V–240 V 380 V–440 V 500 V–500 V 660 V–690 V	kW	75 132 132 65
Short Circuit Protection					
Max. fuse size		aR-characteristic		A	2x1250
Rated short-time withstand current		(1 s-current)		A	24000
For connections with cable terminal or copper busbar					
Connection screw, 4 pieces				mm	M16x50

Ambient temperature +35 °C during 24 hours with peaks up to +40 °C

¹ Ambient temperature +55 °C during 24 hours with peaks up to +60 °C² Valid for lines with grounded common neutral termination, overvoltage category III, Other values on request.

USA / Canada

Rated Thermal Current I_u/I_{th}			
		A	2000
Rated Insulation Voltage U_i			
		V	600
Interrupting Rating			
	110 V–600 V	A	200

Miscellaneous

Tightening torque of terminal screw:	25 Nm (220 lb-in)		
Minimum Voltage:	on request		
Min. Ambient Temperature of Stages:	-5 °C		
Max. Ambient Temperature of Stages:	open at 100 % I _u /I _{th}	55 °C during 24 hours with peaks up to 60 °C Permissible load see rated thermal current	
Storage temperature:	-40 °C to 85 °C (in case of temperature below -5 °C no shock load permissible)		

Approvals and Standards

IEC 60947
EN 60947